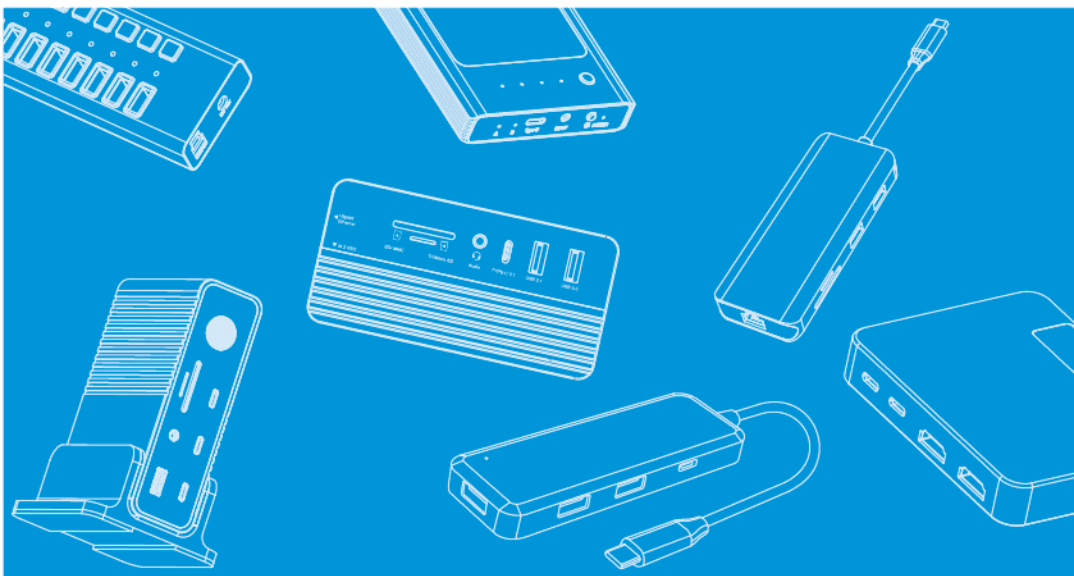


# PRODUCT BROCHURE

PRODUCT MANUAL



The image features a central circular logo on a blue background. The logo contains the text 'PURPLELEC' in white, uppercase letters. To the left of the text is a stylized white icon of a circuit board or a 'P' shape. The background is filled with a complex network of white lines representing circuit traces, which radiate outwards from the central circle. These lines terminate in small white circles, some of which are solid and others are hollow, creating a sunburst or starburst effect. The overall aesthetic is clean, modern, and tech-oriented.

**PURPLELEC**

# C DIRECTORY CONTENTS

## 01

Company Profile

---

01

## 02

Patent&Certificate

---

02

## 03

Product Introduction

---

Thunderbolt 5 03 ~ 04

SSD & HDD Enclosure 05 ~ 08

Video Capture 09 ~ 14

Docking Station 15 ~ 23

USB Hub 24 ~ 28

Card Reader 29 ~ 30

# COMPANY PROFILE



300+  
员工



10000+m<sup>2</sup>  
工厂面积



10000+台  
日生产量

Founded in 2012, our company has been enjoying strong growth in both manufacturing and productivity to become a professional manufacturer of PC peripherals.

We mainly produce USB Hubs, Card Readers, Docking Stations, Thunderbolt 3 & Thunderbolt 4 series products, SSD & HDD Enclosures, USB Adapters, Chargers and many other electronics products. Both OEM & ODM and agents of us are welcome.

Our mission is to ensure product quality with lower prices and develop new models for market. Our target is to provide superior, cost-effective products for our customers.

With commitment to quality, our skilled engineers and technicians are able to develop and provide our customers with the most special, efficient, reliable, and user-friendly connectivity products.

We offer a complete range of after-sale services including assistance with export documentations.

We welcome OEM & ODM orders and can provide customized packagings and instruction manuals. Whether you are a buyer who is searching for new markets or an importer who is looking for comprehensive products selection, we are an ideal choice.

Contact us today and we will reply to your inquiry in less than 24 hours.



# PATENTS&CERTIFICATES



## Association Member



## Factory Audit Certificate



## Thunderbolt 5 Docking Station (4 in 1)

Model: TB050

- Transfer Speed: 80/120Gbps
- 1xDC Power in 20V
- 3xType C 80/120Gbps
- 1xUSB A 3.2 (10Gbps)
- Aluminum Housing



## Thunderbolt 5 Docking Station (5 in 1)

Model: TB051

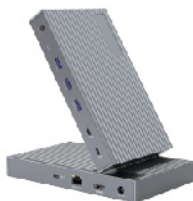
- Transfer Speed: 80/120Gbps
- 1xDC Power in 20V
- 3xType C 80/120Gbps
- 1xUSB A 3.2 (10Gbps)
- 1xNVME SSD Enclosure(80Gbps)
- Max Capacity: 8TB
- Supports SSD Size: 2230/2242/2260/2280
- Aluminum Housing



## Thunderbolt 5 Docking Station (8 in 1)

Model: TB052

- Transfer Speed: 80/120Gbps
- 1xDC Power in 20V
- 2xType C 80/120Gbps
- 1xHDMI 8k@60Hz
- 1xRJ45 Gigabit Ethernet,100M/1000M/2.5G
- 3xUSB A 3.2 (10Gbps)
- 1xNVME SSD Enclosure(80Gbps)
- Max Capacity: 8TB
- Supports SSD Size: 2230/2242/2260/2280
- Aluminum Housing



## Thunderbolt 5 M.2 SSD Enclosure

### Model: TB053A

- Compatible Protocols: NVMe
- Transfer Speed: 80Gbps
- Max Capacity: 8TB
- Supports SSD Size: 2230/2242/2260/2280
- Aluminum Housing
- Tool Free: YES



## Thunderbolt 5 Docking Station (12 in 1)

### Model: TB054

- Transfer Speed: 80/120Gbps
- 1xDC Power in 20V
- 2xType C 80/120Gbps
- 1xHDMI 8k@60Hz
- 1xDP 8K@60Hz
- 2xHDMI 4k@60Hz
- 2xDP 4K@60Hz
- 1xRJ45 Gigabit Ethernet,100M/1000M/2.5G
- 3xUSB A 3.2 ( 10Gbps )
- Aluminum Housing



## Thunderbolt 5 Docking Station (13 in 1)

### Model: TB054-S

- Transfer Speed: 80/120Gbps
- 1xDC Power in 20V
- 2xType C 80/120Gbps
- 1xHDMI 8k@60Hz
- 1xDP 8K@60Hz
- 2xHDMI 4k@60Hz
- 2xDP 4K@60Hz
- 1xRJ45 Gigabit Ethernet,100M/1000M/2.5G
- 3xUSB A 3.2 ( 10Gbps )
- 1xNVME SSD Enclosure(80Gbps)
- Max Capacity: 8TB
- Supports SSD Size: 2230/2242/2260/2280
- Aluminum Housing





## 40Gbps NVMe Enclosure

Model: TB017

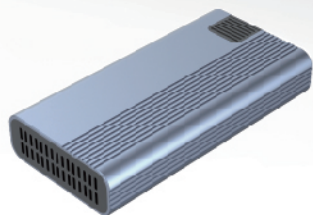
- Compatible Protocols: NVMe SSD
- Transfer Speed: 40Gbps
- USB Interface: USB C
- Max Capacity: 8TB
- Chipset: JHL7440
- Supports ssd Size: 2230/2242/2260/2280
- Material: Aluminum
- Tool Free: YES



## 40Gbps NVMe Enclosure

Model: TB003M1

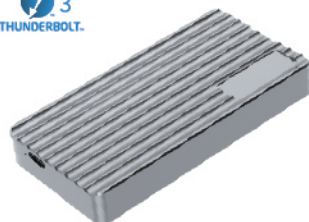
- Compatible Protocols: NVMe SSD
- Transfer Speed: 40Gbps
- USB Interface: USB C
- Max Capacity: 8TB
- Chipset: ASM2464
- Supports SSD Size: 2230/2242/2260/2280
- Material: Aluminum
- Tool Free: YES



## 40Gbps NVMe Enclosure

Model: TB015T

- Compatible Protocols: NVMe SSD
- Transfer Speed: 40Gbps
- USB Interface: USB C
- Max Capacity: 8TB
- Chipset: intel JHL7440
- Supports SSD Size: 2230/2242/2260/2280
- Material: Aluminum
- Tool Free: YES





## M.2 NVMe SSD Enclosure

### Model: TB028

- Compatible Protocols: NVMe SSD
- TransferSpeed: 40Gbps
- Max Capacity: 8TB
- Chipset: GL3590+RTL9210B+JHL7440
- Supports SSD Size: 2230/2242/2260/2280
- 2xHDMI 8K@60Hz
- 1xType 3.2 (10Gbps)
- 2xUSB A 3.2 (10Gbps)
- 1xType C PD3.0 with max 100W
- Built-in Cooling fan
- Aluminum housing
- Tool Free: YES



USB A



HDMI



M.2 NVME



Type C

## M.2 SSD Enclosure Password Protected

### Model: DEM019

- Compatible Protocols: NVMe SSD
- Transfer Speed: 10Gbps
- USB Interface: USB C 3.2 Gen 2
- Max Capacity: 8TB
- Supports SSD Size: 2230/2242/2260/2280
- Advanced digital password protection
- Material: Aluminum
- Tool Free: NO



Type C

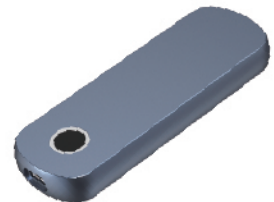


M.2 NVME

## M.2 SSD Enclosure Fingerprint security

### Model: DEM030

- Compatible Protocols: NVMe SSD
- Transfer Speed: 10Gbps
- USB Interface: USB C 3.2 Gen 2
- Max Capacity: 8TB
- Supports SSD Size: 2230/2242/2260/2280
- Advanced fingerprint unlock protection
- Aluminum Housing+ABS
- Tool Free: NO



Type C



M.2 NVME

## Offline Cloning Dual Slot M.2 SSD case

### Model: DEM008

- Compatible Protocols: NVMe SSD
- Transfer Speed: 10Gbps
- USB Interface: USB C 3.2 Gen 2
- Max Capacity: 8TB
- Chipset: JMs586U
- DC: 5V/4A(Min)
- Supports ssD Size: 2230/2242/2260/2280
- Support Offline Cloning, Key switch start
- Material: Aluminum
- Tool Free: YES



## M.2 NVMe SSD Enclosure

### Model: DEM035

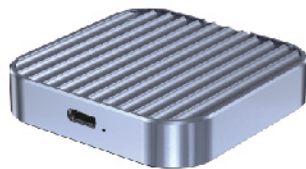
- Compatible Protocols: NVMe & SATA SSDs
- Transfer Speed: 10Gbps
- USB Interface: USB A&USB C 3.2 Gen 2
- Max Capacity: 8TB
- Supports SSD Size: 2230/ 2242
- Aluminum Housing
- Tool Free: YES



## M.2 Magnetic SSD Enclosure

### Model: DEM044

- Compatible Protocols: M.2NVMe/NGFF SSDS
- Transfer Speed: 10Gbps
- USB Interface: USB C 3.2 Gen 2
- Max Capacity: 8TB
- Supports SSD Size: 2230
- Support Magnetic attraction
- Aluminum Housing
- Tool Free: YES



## 10in1 USB C Docks+SSD Enclosure(10Gbps)

### Model: CM073

- Input Type C x1(Connect to host)
- Compatible Protocols: NVMe & SATA SSDs
- Transfer Speed: 10Gbps
- Max Capacity: 8TB
- Video Input: 1xHDMI 4k@60Hz
- 1xType C (PD 100W)
- 1xRJ45 Gigabit Ethernet,10M/100M/1000M
- 1xAudio (3.5mm Audio&Mic)
- 1xUSB A 3.0 (5Gbps)
- 1xUSB A 3.2 (10Gbps)
- 1xType C 3.2 (10Gbps)
- 1xTF/Micro SD 3.0 (Up to 104Mb/s)
- 1xSD/MMC 3.0 (Up to 104Mb/s)
- Aluminum Housing
- Tool Free: YES



USB A



HDMI



Type C



Micro SD



SD



RJ45



Audio



M.2 NVMe&amp;SATA

## M.2 NVMe SSD Enclosure+Video Extension(40Gbps)

### Model: TB014

- Transfer Speed: 40Gbps
- Compatible Protocols: NVMe SSD
- Max Capacity: 8TB
- Chipset: GL3590+RTL9210B+JHL7440
- Supports SSD Size: 2230/2242/2260/2280
- 2xDP 8K@60Hz
- 1xType 3.2(10Gbps)
- 2xUSB A 3.2(10Gbps)
- DC: 5V/3A(Min)
- Built-in Cooling fan
- Aluminum Housing+ABS
- Tool Free: NO



USB A



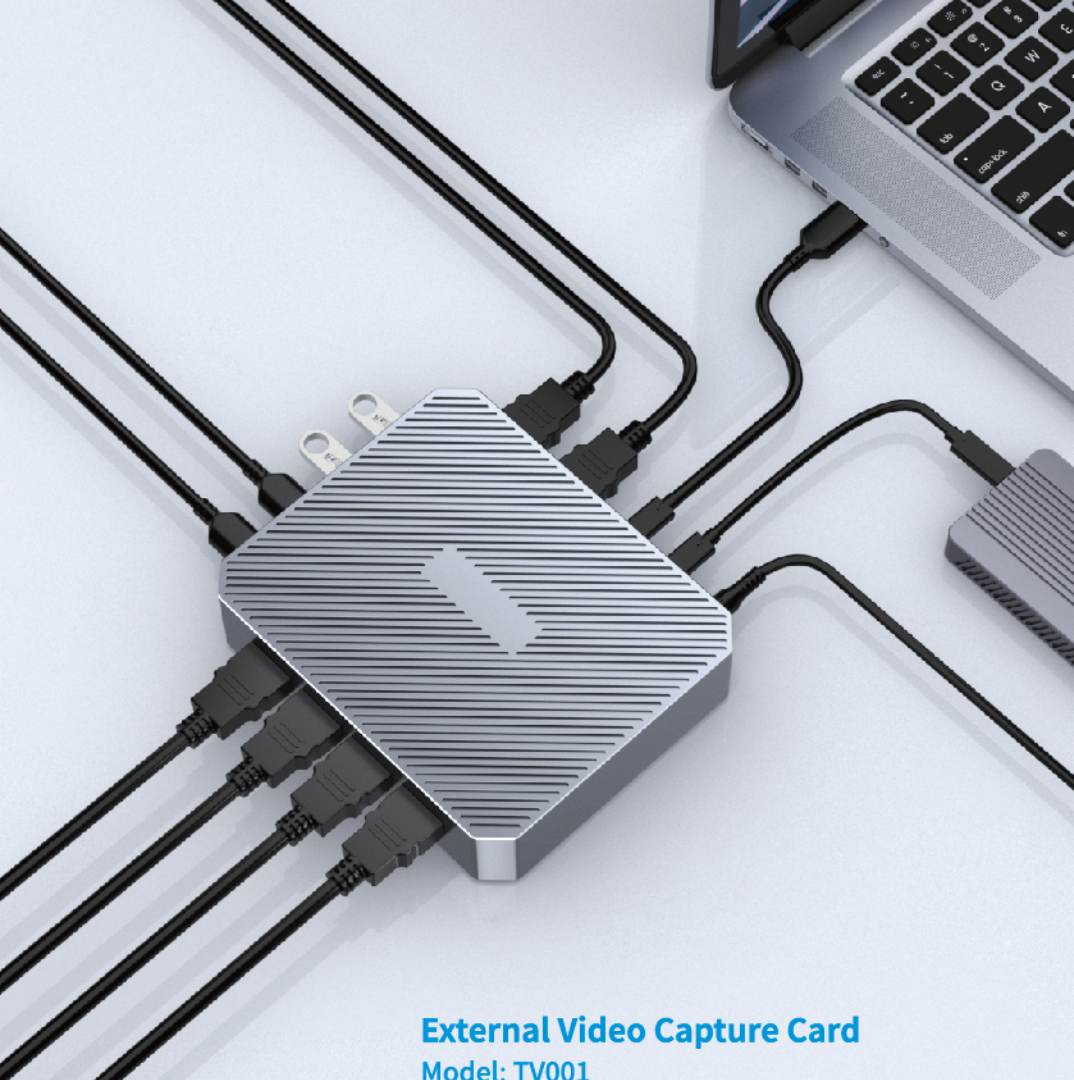
Type C



DP



M.2 NVMe



## External Video Capture Card

### Model: TV001

- Output Interface: USB C(Connect to host)
- Capture Video Resolution: UP to 1080P@60Hz
- Video Input: 1xHDMI 4k@30Hz
- Video loop out: 1xHDMI 4k@30Hz
- Color space : YUY2
- Audio: 1x3.5mm Audio Output
- Aluminum Housing



Type A



HDMI



Type C



Audio



SDI IN

## External Video Capture Card

### Model: VS050

- Output Interface: USB C+USB A (Connect to host)
- Capture Video Resolution: UP to MAX 1080P/60Hz
- Video Input: 1xHDMI 4k@30Hz
- Color space: YUY2
- Aluminum Housing+ABS



USB A



HDMI



Type C

## USB 3.2 Video Capture Card

### Model: HD33

- Output Interface: Type C (Connect to host)
- USB capture streaming up to 1080P@60Hz
- Video Input: 1xHDMI4k@30Hz
- Video loop out: 1xHDMI 4k@30Hz
- Color space: YUY2/MJPEG
- 3.5mm audio input, UAC specification audio capture
- Plug and play without install driver
- Video capture low latency
- ABS material



HDMI



Type C



MIC IN

## Loop I/O 1080P Capture Card

### Model: HDU3H

- Output Interface: Type c 3.0 (Connect to host)
- Video Input: 1xHDMI 1080P@60Hz
- Video loop out: 1xHDMI 1080P@60Hz
- USB capture streaming up to 1080P@60Hz
- Color space: YUY2/YUV/MIPEG
- 1x3.5mm Mic audio input
- 1x3.5mm Audio Output
- Plug and play without install driver
- Video capture low latency
- ABS material



HDMI



Type C



Audio OUT



MIC



## External Video Capture Card

### Model: VS2851

- Output Interface: Type B (Connect to host)
- Capture Video Resolution: 720P@60Hz
- Quad AHD input up to 720P@60Hz
- USB capture streaming up to 720P@60Hz
- Color space : MJPEG
- Aluminum Housing



Type B



SDI IN

## External Video Capture Card

### Model: VS045

- Output Interface: Type C 3.0 (Connect to host)
- Capture Video Resolution: UP to 1080@60Hz
- Video Input: 1xHDMI 4k@30Hz
- Video loop out: 1xHDMI 4k@30Hz
- Color space : YUY2/MJPEG
- Audio : 1x3.5mm Audio Output
- Aluminum Housing+ABS



HDMI



Type C

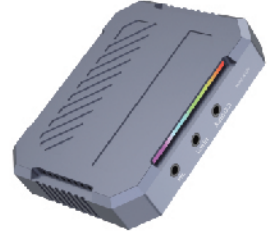


Audio OUT

## 4K Streaming Video capture card

### Model: VS081

- Output Interface: USB C (Connect to host)
- Capture Video Resolution: UP to 4K@60Hz
- Video Input: 1xHDMI 4k@60Hz
- Video Input: 1xHDMI 4k@60Hz
- Video loop out: 1xHDMI 4k@60Hz
- Color space: YUY2/YUV/JPEG
- Audio: 1x3.5mm Audio Output
  - 1x3.5mm Mic Input
  - 1x3.5mm Line IN
- Aluminum Housing



## External Video Capture Card and Hub

### Model: VS060

- Output Interface: USB C(Connect to host)
- Capture Video Resolution: UP to 1080@60Hz
- Video Input: USB-C
- Video loop out: 1xHDMI 1080@60Hz
- Color space: YUY2
- 1xType C(PD 100W)
- 1xUSB A3.0(5Gbps)
- Aluminum Housing+ABS



## External video capture card

### Model: VS067

- Output Interface: USB C3.2 Gen2 (Connect to host)
- Capture Video Resolution:UP to 4K@60Hz
- Video Input: 2xHDMI 4K@60Hz
- Video loop out: 2xHDMI 4K@60Hz
- Color space: YUY2
- Audio: 2x3.5m Mic Input
- The RGB colorful light with 15 modes
- Aluminum Housing



## Quad HDMI Input Video Capture Card

### Model: 4HDMI

- Host interface PCIE 2.0X4 20Gbps transmission bandwidth
- Quad HDMI input up to 1080P@60Hz, 1080i
- PCIe capture streaming up to 1080P@60Hz
- Color space YUY2
- Need install driver
- Video capture Ultra-low delay



HDMI

## Quad SDI Input Video Capture Card

### Model: 4SDI

- Host interface PCIE 2.0X4 20Gbps transmission bandwidth
- Quad SDI input up to 1080P@60Hz, 1080i
- PCIe capture streaming up to 1080P@60Hz
- Color space YUY2
- Need install driver
- Video capture Ultra-low delay



SDI IN

## HDMI+SDI Input Video Capture Card

### Model: VS2584

- Host interface PCIE 2.0X1 5Gbps transmission bandwidth
- HDMI / SDI input up to 1080P@60Hz, 1080i
- PCIe capture streaming up to 1080P@60Hz
- Color space YUY2
- Need install driver
- Video capture Ultra-low delay



HDMI



SDI

## Internal Video Capture Card

### Model: VS014M1

- Host interface PCIE 2.0X4 20Gbps transmission bandwidth
- 2 HDMI video inputs and 2 SDI video inputs
- PCIe capture streaming up to 1080P@60Hz
- Input port: 1 line in audio input
- Audio capture complies with the DirectSound specification



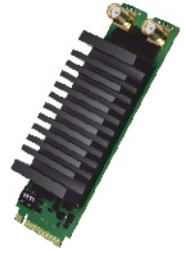
SDI IN



## Dual SDI input M.2 Capture Card

### Model: VS039

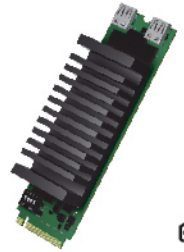
- Host interface M.2 PCIE
- SDI input up to 1080P@60Hz, 1080i
- M.2 capture streaming up to 1080P@60Hz
- Color space YUY2
- Need install driver
- Video capture low latency



## Mini HDMI Loop I/O M.2 Capture Card

### Model: VS041

- Host interface M.2 PCIE
- Video Input: 1xMini HDMI 4K@60Hz
- Video loop out: 1xMini HDMI 4K@60Hz
- M.2 capture streaming up to 4K@60Hz
- Color space YUY2
- Need install driver
- Video capture low latency



## Internal Video Capture Card

### Model: VS2583

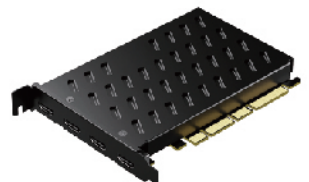
- Host interface PCIE 2.0X4
- 20Gbps transmission bandwidth
- Capture Video Resolution: UP to 4K@60Hz
- Video Input: 1\*HDMI 4k@60Hz
- Video loop out: 1\*HDMI 4k@60Hz
- Color space: YUY2
- Need install driver
- Video capture Ultra-low delay



## Internal Video Capture Card

### Model: VS034

- Host interface PCI-E 3.0X4
- Quad HDMI input up to 4K@30Hz, 1080i
- PCIe capture streaming up to 4K@30Hz
- Color space YUY2
- Need install driver
- Video capture Ultra-low delay

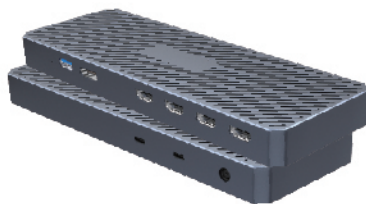




## Quad HDMI Input Thunderbolt3 Capture Card+Dock Station

Model: TV003

- Host interface dual Type-C female Thunderbolt 3
- Quad HDMI input up to 1080P@60Hz
- TBT capture streaming up to 1080P@60Hz
- 1xType C, TBT3/USB4 Max transmission rate 40Gbps
- 1xUSB A 3.0 Max transmission rate 5Gbps
- 1xDP(8K@60Hz)
- 1xDC power supply is 20V/3.25A and supports
- PD power supply for the host
- Color space YUY2
- LPCM audio signal, support UVC from Support
- daisy chain extension, 3D DNR
- Video capture low latency
- Aluminum Housing





## 15 in 1 USB C Docking Station

Model: DS015

- Input Type C x1 (Connect to host)
- 1xType C (PD 100W)
- 1xType C PD charging output, up to 5V/9V/12V 25W charging
- 1xHDMI (Max 4K@30Hz)
- 1xHDMI (Max 4K@60Hz)
- 1xDP(Max 4K@60Hz)
- 1xRJ45 Gigabit Ethernet,10M/100M/1000M
- 1xTF/Micro SD 3.0( Up to 104Mb/s)
- 1xSD/MMC 3.0 (Up to 104Mb/s)
- 1xAudio (3.5mm Audio&Mic )
- 2xType C 3.2 (10Gbps)
- 3xUSB A 3.0 (5Gbps)
- Aluminum housing+ABS



## 6 in 1 Steam Deck USB C Docking Station

### Model: HBC065

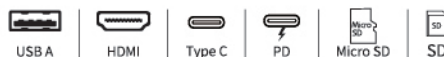
- Input Type C x1 (Connect to host)
- 1xType C (PD 100W)
- 1xHDMI (4K@60Hz)
- 1xRJ45 Gigabit Ethernet,10M/100M/1000M
- 3xUSB A 3.0 (5Gbps)
- Aluminum housing+ABS



## 9 in 1 USB C Docking Station

### Model: HBC083

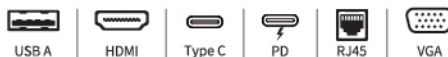
- Input Type C x1(Connect to host)
- 1xType C (PD 100W )
- 1xHDMI (4K@60Hz)
- 1xTF/Micro SD 3.0( Up to 104Mb/s)
- 1xSD/MMC 3.0 (Up to 104Mb/s)
- 2xUSB A 3.0 (5Gbps)
- 3xType C 3.2 (10Gbps)
- Aluminum housing+ABS



## 8 in 1 USB C Docking Station

### Model: HBC086

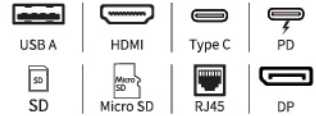
- Input Type C x1(Connect to host)
- 1xType C (PD3.0 100W )
- 2xUSB C 3.0 (5Gbps)
- 2xUSB A 3.0 (5Gbps)
- 1xHDMI (4K@60Hz)
- 1xVGA(1080@60Hz)
- 1xRJ45 Gigabit Ethernet,10M/100M/1000M)
- Aluminum housing+ABS



## 12 in 1 USB C Docking Station

### Model: DS010-A

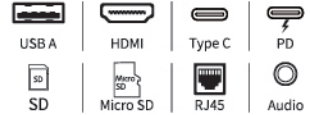
- Input Type C x1(Connect to host)
- 1xType C (PD 100W)
- 1xHDMI(4K@60Hz)
- 1xHDMI(4K@30Hz)
- 1xDP (4k@60Hz)
- 1xRJ45 Gigabit Ethernet,10M/100M/1000M
- 1xType C 3.2(10Gbps)
- 2xUSB A 3.2 (10Gbps)
- 2xUSB A 3.0(5Gbps)
- 1xTF/MicroSD 3.0 (104Mb/s)
- 1xSD/MMC 3.0 (104Mb/s)
- Aluminum housing+ABS



## Multi-Function Laptop Stand USB C Docking

### Model: CM046

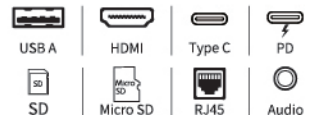
- Input Type C x1(Connect to host)
- 1xType C (PD 100W)
- 2xHDMI (4K@60Hz)
- 1xDP (Max 4K@60Hz)
- 3xUSB A 3.0 ( 5Gbps)
- 1xType C 3.0 (5Gbps)
- 1xTF/Micro SD 3.0( Up to 104Mb/s)
- 1xSD/MMC 3.0 (Up to 104Mb/s)
- 1xAudio (3.5mm Audio&Mic)
- 1xRJ45 Gigabit Ethernet,10M/100M/1000M
- Aluminum housing+ABS

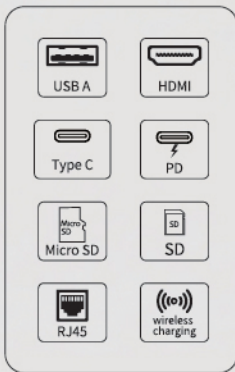


## Multi-Function Laptop Stand USB C Docking

### Model: HBC097

- Input Type C x1(Connect to host)
- 1xType C (PD 100W)
- 1xHDMI (4K@60Hz)
- 3xUSB A 3.2 (10Gbps)
- 1xType C 3.2(10Gbps)
- 1xTF/Micro SD 3.0( Up to 104Mb/s)
- 1xSD/MMC 3.0 (Up to 104Mb/s)
- 1xAudio (3.5mm Audio&Mic)
- 1xRJ45 Gigabit Ethernet,10M/100M/1000M
- Aluminum housing+ABS





## 12 in 1 USB C Docking Station

Model: HBC098

- Input Type C x1 (Connect to host)
- 1xType C (PD3.0 100W)
- 2xUSB A 3.0 (5Gbps)
- 3xUSB A 2.0 (480Mbps)
- 1xHDMI (4K@60Hz)
- Wireless charging up to 15W
- 1xTF/Micro SD 3.0 (Up to 104Mb/s)
- 1xSD/MMC 3.0 (Up to 104Mb/s)
- 1xRJ45 Gigabit Ethernet,10M/100M/1000M
- Audio (3.5mm Audio&Mic)
- Aluminum+ABS

## 7 in 1 USB C Docking Station

### Model: HBC026

- Input Type C x1(Connect to host)
- 1xType C (PD 100W)
- 1xHDMI (4K@60Hz)
- 1xVGA(Max 1080P/60Hz)
- 1xRJ45 Gigabit Ethernet,10M/100M/1000M
- 3xUSB A 3.0 (5Gbps)
- Aluminum housing+ABS



## 8 in 1 USB C Docking Station

### Model: HBC063

- Input Type C x1(Connect to host)
- 1xType C (PD 100W)
- 1xHDMI (4K@30Hz)
- 1xRJ45 Gigabit Ethernet,10M/100M/1000M
- 1xTF/Micro SD 3.0( Up to 104Mb/s)
- 1xSD/MMC 3.0 (Up to 104Mb/s)
- 3xUSB A 3.0 (5Gbps)
- Aluminum housing+ABS



## 12 in 1 USB C Docking Station

### Model: DS009

- Input Type C x1(Connect to host)
- 1xType C (PD 100W)
- 2xHDMI (4K@60Hz)
- 1xVGA(1080P@60Hz)
- 1xRJ45 Gigabit Ethernet,10M/100M/1000M
- 1xAudio (3.5mm Audio&Mic )
- 1xType C 30 (5Gbps)
- 1xUSB A 2.0 (480Mbps)
- 2xUSB A 3.0 (5Gbps)
- 1xTF/Micro SD 3.0(Up to 104Mb/s)
- 1xSD/MMC 3.0(Up to 104Mb/s)
- Aluminum housing+ABS



## 4 in 1 USB C Docking Station

Model: HB3045L

- Input Type C x1 (Connect to host)
- 1xTypeC(PD 3.0 100W)
- 2xTypeC 3.2(10Gbps)
- 1xDisplaying port/USB 3.2
- Aluminum housing



Type C

PD

## 6 in 1 Thunderbolt/USB 4 Docking Station

Model: TU001T



- Transfer Speed: 40Gbps
- 1xDC Power in 20V
- 3xType C,TBT4/USB4 Max transmission rate 40Gbps
- support Type C video output (single video output 8K/60Hz, dual video output 8K/30Hz+4K/60Hz), power 5V/3A
- 1xUSB A 3.2 (10Gbps)
- Aluminum housing



USB A

USB 4

DC

## 13 in 1 USB C Docking Station

Model: DS007T

- Input Type Cx1(Connect to host)
- 1xType C (PD 100W)
- 1xDC 12V 3A(Min)
- 2xHDMI(4K@60Hz)
- 2xDP(4K@60Hz)
- 1xRJ45 Gigabit Ethernet,10M/100M/1000M
- 1xTF/Micro sD 3.0( Up to 104Mb/s)
- 1xSD/MMC 3.0 (Up to 104Mb/s)
- 1xAudio (3.5mm Audio&Mic)
- 3xUSB A 3.2(10Gbps)
- Aluminum housing



USB A

HDMI

Type C

PD

DC

DP

Micro SD

SD

RJ45

Audio



## 13 in 1 USB C Docking Station

### Model: DS018T-R

- Transfer Speed: 40Gbps
- 1xDC Power in 20V, Device host PD 85W
- 2xType C,TBT4/USB4 Max transmission rate 40Gbps, support Type C video output(single video 8K/60Hz, dual video output 8K/30Hz+4K/60Hz),power 5V/3A
- 1xType C 3.2 (10Gbps)
- 1xHDMI 8K@60Hz video output
- 3xUSB A 3.2 Gen2 (10Gbps)
- 2xUSB A 2.0 (480Mbps)
- 1xRJ45 Gigabit Ethernet,10M/100M/1000M
- 1xTF/Micro SD 3.0 ( Up to 104Mb/s)
- 1xSD/MMC 3.0 (Up to 104Mb/s)
- 1xAudio (3.5mm Audio&Mic)
- Aluminum housing



## 18 in 1 Thunderbolt/USB 4 Docking Station

### Model: DS016T

- Input Type C x1(Connect to host)
- 1xType C (PD 100w)
- 2xHDMI(4K@60Hz)
- 2xDP(4K@60Hz)
- 2xUSB A 3.0 (5Gbps)
- 2xUSB A 2.0 (480Mbps)
- 2xType C 3.2 (10Gbps)
- 1xTF/Micro sD 3.0( Up to 104Mb/s)
- 1xSD/MMC 3.0 (Up to 104Mb/s)
- 3xAudio (3.5mm Audio&Mic)
- 1xRJ45 Gigabit Ethernet,10M/100M/1000M
- DC: 20V/6A
- Aluminum housing



## 20 in 1 Thunderbolt/USB 4 Docking Station

Model: DS019



- Transfer Speed: 40Gbps
- 1xDC Power in 20V , Device host PD 85W  
2xType C,TBT4/USB4 Max transmission rate 40Gbps  
support Type C video output(single video output 8K/60Hz,  
dual video output 8K/30Hz+4K/60Hz),power 5V/3A
- 1\*HDMI 8K@60Hz video output
- 4\* USB A 3.2 Gen2 (10Gbps)
- 2xUSB A 2.0 (480Mbps)
- 1xTF/Micro SD 4.0 ( Up to 312Mb/s)
- 1xSD/MMC 4.0 (Up to 312Mb/s)
- 1xMIC (3.5mm )
- 2xAudio(3.5mm)
- 3xType-C 3.2 Gen2 (10Gbps)
- 1xType-C 3.2 Gen2 PD20W (10Gbps)
- 1xRJ45 2.5Gb Ethernet
- Aluminum housing



## 20 in 1 Thunderbolt/USB 4 Docking Station

Model: DS020



- Transfer Speed: 40Gbps
- 1xDC Power in 20V , Device host PD 85W
- 1xType C, TBT/USB4 40gbps interface downward compatibility  
(Video output up to Single 8K@30Hz or Dual 4K@60Hz or  
Three 4K@30Hz), power output up to 15W
- 3xHDMI +3 DP(2\* 8K@60Hz , 4\*4k@60Hz)
- 8xUSB A 3.2 Gen2 (10Gbps)
- 1xTF/Micro SD 4.0 ( Up to 312Mb/s)
- 1xSD/MMC 4.0 (Up to 312Mb/s)
- 1xAudio (3.5mm Audio&Mic )
- 1xRJ45 2.5G Ethernet
- Aluminum housing



## 10 in 1 USB C Hub

Model: CM064

- Input Type Cx1(Connect to host)
- 8xUSB A 3.0 (5Gbps)
- 2xType C 3.0 (5Gbps)
- DC 12V3A/24V5A
- Separate key switch
- Aluminum housing+ABS



USB A



Type C



DC



## Multiple ports power USB Hub

Model: HS081/HS070/HS084/HS082

- Input Type B x1 (Connect to host)
- Add 7/10/13/16 Type A USB 3.1 5Gbps interface downward compatibility
- support power out up to 1.5A
- Slim design effectively, plug and play
- With power adapter
- Separate key switch
- Aluminum housing+ABS

16Ports / 90W

13Ports / 60W

10Ports / 48W

7Ports / 36W



USB A



DC

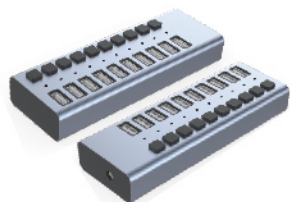


Type B

## Multiple ports power USB Hub

### Model: HS070M1

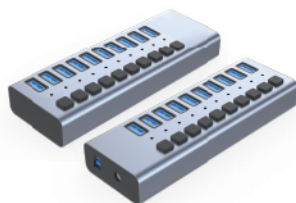
- Input Type A x1 (Connect to host)
- 10xType A, charging only, power out up to 5V 2.4A
- DC 12V 4A(power adapter)
- ON/OFF switch control the power
- Aluminum housing+ABS



## Multiple ports power USB Hub

### Model: HS070M2

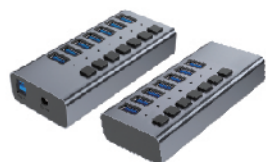
- Input Type B x1 (Connect to host)
- 10xUSBA 3.2(Max 10Gbps data transmission)
- DC 12V 4A(power adapter)
- ON/OFF switch control the power
- Aluminum housing+ABS



## Multiple ports power USB Hub

### Model: HS081M2

- Input Type B x1 (Connect to host)
- 7xUSBA 3.2(Max 10Gbps data transmission)
- DC 12V 3A(power adapter)
- ON/OFF switch control the power
- Aluminum housing+ABS



## 10 in 1 USB C Hub

### Model: HBC006

- Input Type C x1 (Connect to host)
- 2xType C 3.0 (5Gbps)
- 4xUSB A 3.0 (5Gbps)
- 3xUSB A, only power out 5V 2.4A(PD 12W)
- 1xRJ45 Gigabit Ethernet,10M/100M/1000M
- DC 12V 5A
- Separate key switch
- Aluminum housing+ABS



# iPad tablet Live broadcast good assistant

Fast charge does not power down

4K Ultra HD Extension

PD100W fast charge



## 5 in 1 USB C Hub

Model: HBC028

- Input USB C x1(Connect to host)
- 1xType C (PD 100W)
- 1xHDMI(4K@30Hz)
- 3xUSB A3.0(5Gbps)
- Aluminum housing+ABS



USB A



HDMI



PD

## 5 in 1 USB C Hub

### Model: HBC056

- Input Type C x1 (Connect to host)
- 1xType C (PD 100W)
- 1xHDMI (4K@30Hz)
- 3xUSB A 3.0 (5Gbps)
- Aluminum housing+ABS



## 5 in 1 USB C Hub

### Model: HBC057

- Input Type C x1 (Connect to host)
- 1xType C (5V/4A)
- 3xUSB A 3.0 (5Gbps)
- 1xRJ45 Gigabit Ethernet,10M/100M/1000M)
- Aluminum housing+ABS



## 7 in 1 USB C Hub

### Model: HBC070M1

- Input Type C x1(Connect to host)
- 1xType C (PD 100W)
- 1xHDMI (4K@60Hz)
- 1xRJ45 Gigabit Ethernet,10M/100M/1000M
- 1xTF/Micro SD 3.0( Up to 104Mb/s)
- 1xSD/MMC 3.0 (Up to 104Mb/s)
- 2xUSB A 3.0 (5Gbps)
- Aluminum housing+ABS



## 4 in 1 USB A Hub

### Model: HB3018

- Input USB A x1(Connect to host)
- 1xUSB A 3.0 (5Gbps)
- 3xUSB A 2.0 (480Mbps)
- ABS material



## 4 in 1 USB C Hub

### Model: HBC071

- Input Type C x1(Connect to host)
- 4xType C 3.2 (10Gbps)
- ABS material



## 4 in 1 USB C Hub

### Model: HBC096

- Input Type C x1(Connect to host)
- 4xHDMI (Max 4K@60Hz)
- Aluminum housing+ABS



## 7 in 1 USB C Hub

### Model: HBC080

- Input Type C x1(Connect to host)
- 1xType C (PD3.0 100W)
- 3xUSB A 3.0 (5Gbps)
- 2xHDMI (4K@60Hz)
- 1xRJ45 Gigabit Ethernet,10M/100M/1000M)
- Aluminum housing+ABS



## 6 in 1 High Speed Card Reader

### Model: CS001

- 1xType C 3.2 (10Gbps)
- 1xTF/Micro SD 4.0 (UHS-II Up to 312Mb/s)
- 1xSD/MMC 4.0 (UHS-II Up to 312Mb/s)
- 1xCFExpress (10Gbps)
- 1xCFast (5Gbps)
- DC 5V/3A(Min)
- Slot CFast: CFast Typ I, CFast Typ II
- Aluminum Housing



## Dual Interface USB Card Reader

### Model: CS004

- Input Type C x1(Connect to host)
- 1xTF/Micro SD4.0 (UHS-IIUp to 312Mb/s)
- 1xSD/MMC 4.0 (UHS-II Up to 312Mb/s)
- Aluminum housing+ABS



## 2 in 1 High Speed Card Reader

### Model: CS006

- Input Type C x1 (Connect to host)
- 1xCFExpress (10Gbps)Compatible with XQD
- Aluminum housing+ABS





## 4 in 1 Card Reader

Model: CS007

- Input Type C+USB A x1(Connect to host)
- 1xTF/Micro SD 3.0 ( Up to 104Mb/s)
- 1xSD/MMC 3.0 (Up to 104Mb/s)
- 1xMS/MS Pro/MS Duo/MS Pro Duo
- 1xCF: Compact Flash
- Support four card reading andwriting at thesame time
- With both USB 3.0 & USB C type of interface for easy use
- ABS material



## USB 3.0/USB C 2 in 1 Card Reader

Model: CS009

- Input Type C x1 and USB A x1(Connect to host,2 Select 1)
- 1xTF/Micro SD 3.0 ( Up to 104Mb/s)
- 1xSD/MMC 3.0 (Up to 104Mb/s)
- Two slots work simultaneously
- Aluminum housing+ABS



## USB C 3.0 2 in 1 Card Reader

Model: CS010

- Input Type C+USB A x1(Connect to host)
- 1xTF/Micro SD 3.0 ( Up to 104Mb/s)
- 1xSD/MMC 3.0 (Up to 104Mb/s)
- Two slots work simultaneously
- Aluminum housing+ABS





Follow us on social media to get the latest product and solution information

**Purplelec INC. Co.,Ltd.**



 CHINA

 No.401,501, 601, 8th Building, Hongye Industrial Area,  
Lezhujiao, Huangmabu Community, Hangcheng Avenue,  
Bao'an District, Shenzhen, China

 +86-755-29785463

 info@purplelec.com

